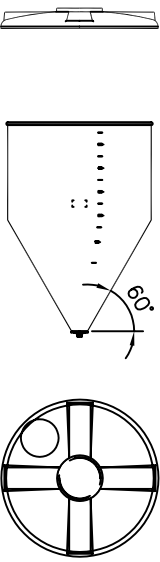
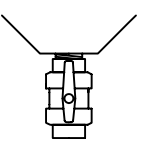


## Container 6.000 Liter, Typ TCA 60/L

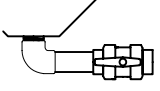
**Innenbehälter**



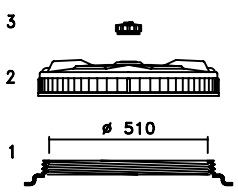
**Entleerung**

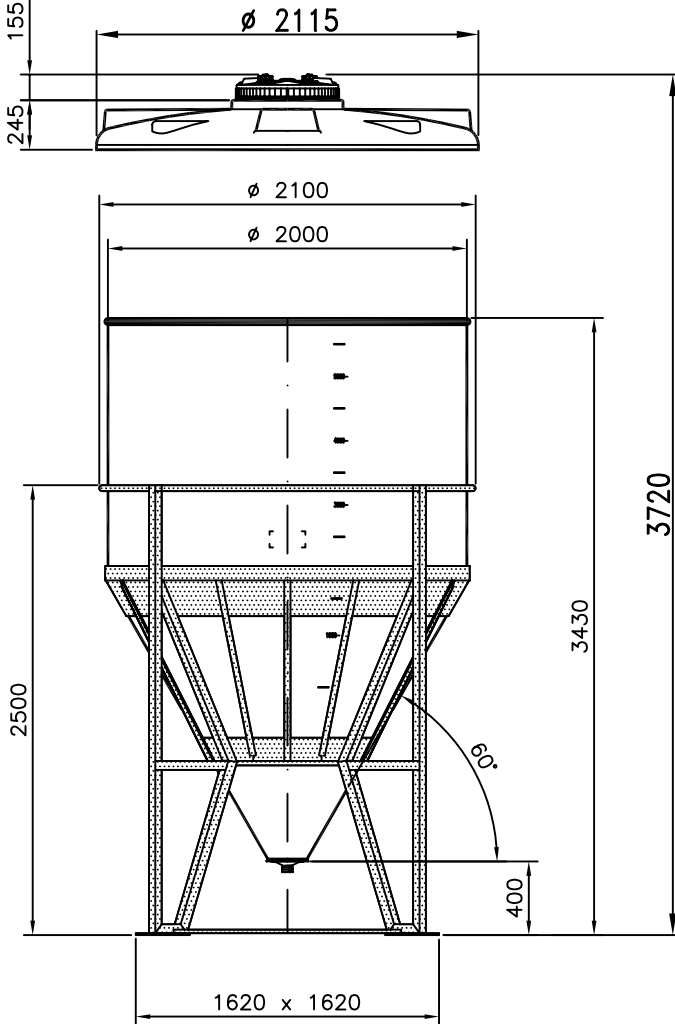


**Vertikal**



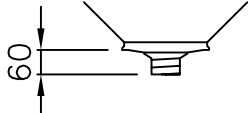
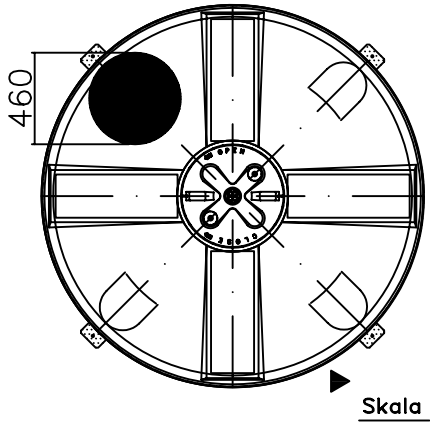
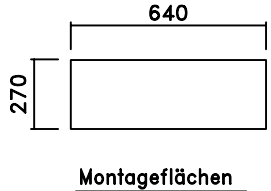
**Horizontal**

- 
- 3
  - 2
  - 1
- 1: Behälteröffnung  
 2: Schraubdeckel CPF-570  
 3: 2 Stck. Lüfter SF1



~4270 Liter

~1730 Liter



1" - 1 1/4" - 1 1/2" - 2" - 2 1/2" - 3" - 4"